



Costa Navarino Golf Club\_The Hills Course

# PROFILE





# TABLE OF CONTENTS



## \_THE COMPANY

- Our purpose
- The personnel

## \_SERVICES

- Locations

## \_CERTIFICATIONS

- ISO 9001:2015
- ISO14001:2015
- ISO45001:2018
- ISO 39001:2012

## \_PROJECTS

- Design, Construction, Maintenance
- Technical consulting





# ABOUT US

## THE COMPANY

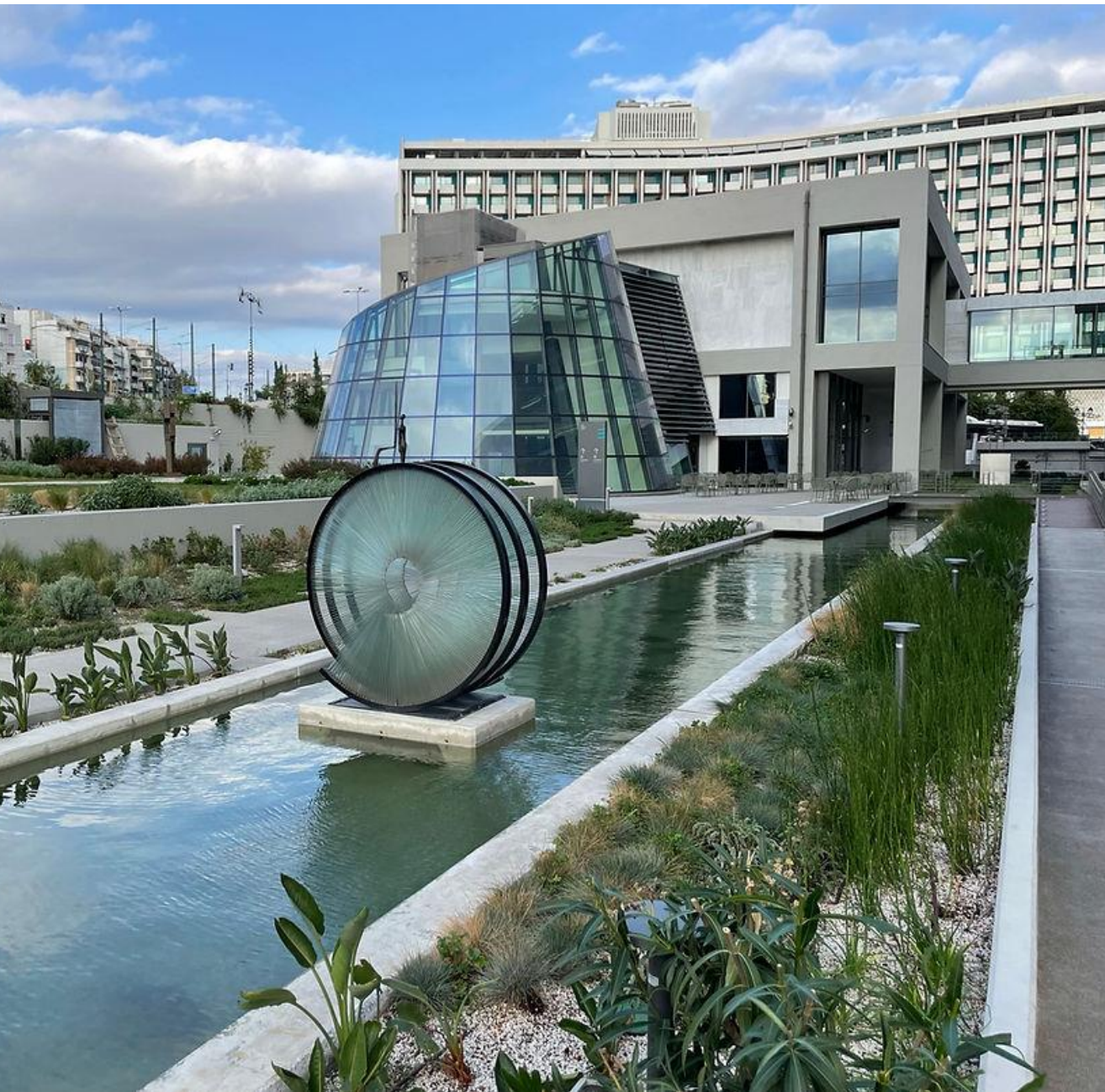
Landmacon SA is a leading landscaping company providing design, construction, consulting and maintenance services in Greece. The company is based in Athens and operates all over Greece as well as abroad. The success lies in the combination of right planning and the know-how that we gained through our multi-year experience in the construction field.



The National Gallery – Alexandros Soutzos Museum







## OUR PURPOSE

The goal of the company is to provide a complete landscape design process. The dedicated staff undertakes the idea, until implementation, always according with the design guidelines, delivering a functional and aesthetic result that fully meets customers' expectations.





Noval Property\_Office Building





# THE PERSONNEL

Landmacon's team is well-trained and specialized, incorporating staff of a variety of scientific backgrounds with the aim of an efficient and integrated management of each case. Our team are supplied with full top-quality equipment for the best possible result of any kind of work (crane, woodchopper, agricultural tractors, etc.)

Agriculturists, Engineers, Gardeners, Machine operators and skilled technicians at landscape construction, are joining forces in order to achieve the best results with respect to the natural environment.

The training includes work instructions, safety, and health at work environmental awareness of pesticide use and waste management, as well as information and familiarization with new materials and machinery.





# CERTIFICATIONS

Landmacon as part of its activities, follows certified management.





- Landmacon implements a certified, quality management system in compliance with the requirements of **Standard ISO 9001:2015**. The main target is to constantly improve the provided services and to satisfy the demands of company's customers.
- Primary value is the protection of environment. The company operates a certified environmental management system, in compliance with the requirements of **Standard ISO 45001:2018**. According to the environmental policy, the company encourages the use of eco-friendly products and materials and the proper management of all waste products from construction and maintenance activities (separation of recyclable materials, transportation and disposal of non – hazardous waste to licensed companies etc).
- Simultaneously, the company implements a certified, health and safety management system according to the specifications of **Standard ISO 45001:2018**. It is our main responsibility to create a proper workplace environment to protect health, safety and welfare of workers, cooperators and members of public who could be affected by company's operations and to eliminate possible risks and dangerous incidents.
- The administration of Landmacon is aware in road safety issues. The basic target is the safe transportation of personnel and materials and the elimination of accidents of all parties involved with company's activities (company's personnel, client's personnel, third party). A road safety management in compliance with the requirements of **Standard ISO 39001:2012** is implemented.





# SERVICES

The company is active in the following fields:

- Landscape study and design
- Project management at landscape projects
- Landscape construction and maintenance
- Environmental projects (management of sewage treatment plants and waste management)



Landscape study and design



Landscape maintenance



Landscape construction



Project management





# LOCATIONS



Landmacon provides fast and prompt services to customers inside, outside of Attica as well as abroad.





Athens, Bucharest Romania



Thessaloniki

Chalkidiki

Tempi

Pylos / Costa Navarino

Katerini / Korinos / Makrigialos / Aeginio

Malakasa

Evinochori, Messologgi

Markopoulo

Malesina

Megalopoli

Iliki

Loutraki, Korinthos

PATHE Motorway

Ionia odos Motorway

Kentriki odos Motorway

Marathonos Highway

### ISLANDS

Corfu

Kea

Zanthe

Lesvos

Kefalonia

Samos

Skopelos

Kos

Skiathos

Poros

Santorini

Spetses

Mykonos

Rhodes

Paros

Crete

Aigina

# Portfolio

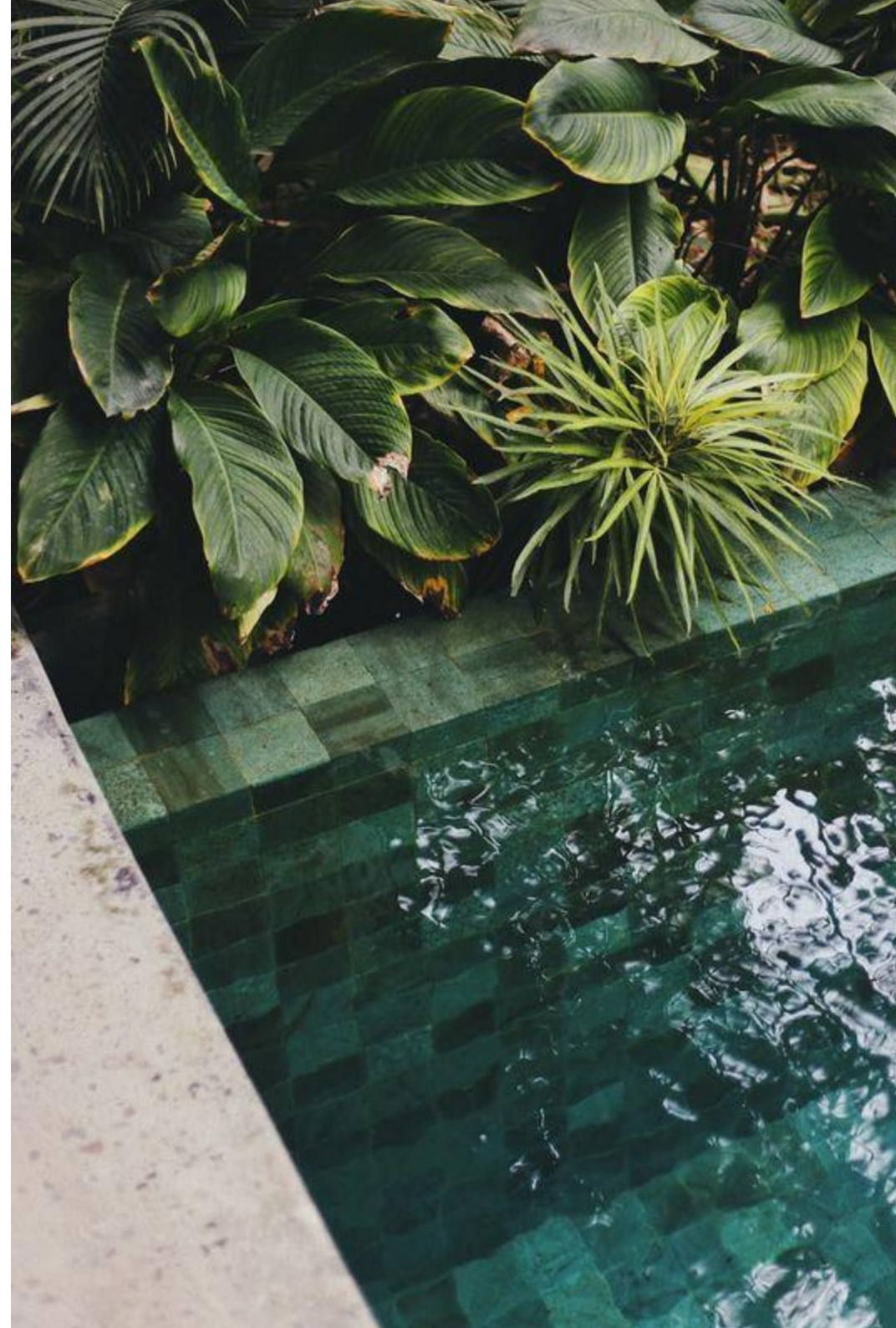
— Landscape design

Construction

Maintenance

Technical consulting

# PROJECTS

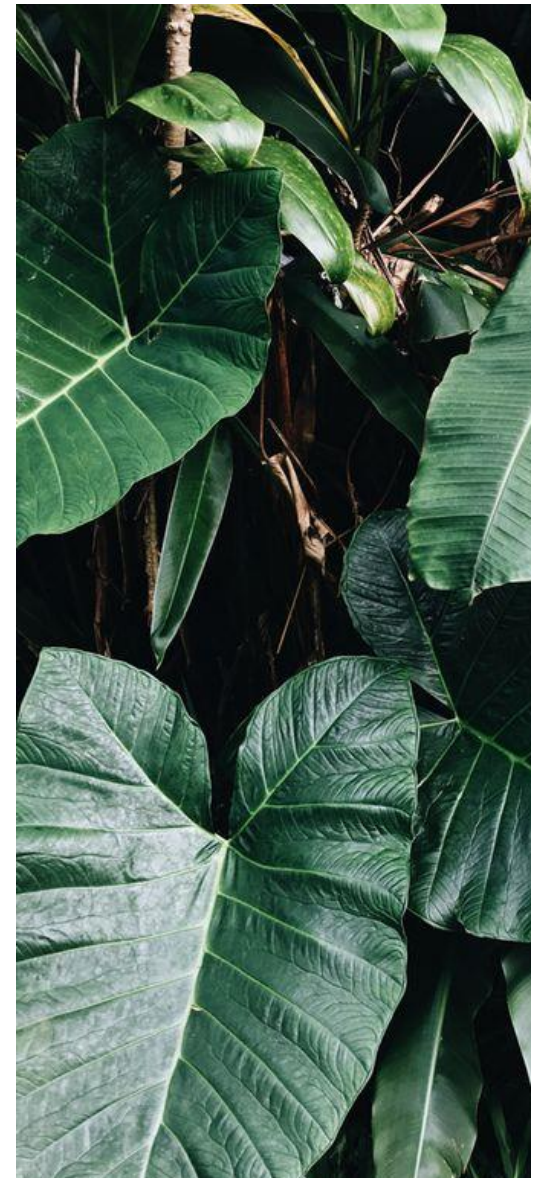






## Photobook

Landmacon's experienced scientific staff undertakes both landscape and irrigation systems studies for large-scale projects. At the same time, the collaboration with specialized scientists (landscape architects, agronomists, soil specialists, engineers etc.) ensures the proper design and implementation of every project.





## GLOBALWORTH CAMPUS, ROMANIA

\_Masterplan



**Year**  
2018

**Project**  
Landscape Design

**Location**  
Globalworth Campus\_Bucharest Romania

## Large scale projects

\_3d





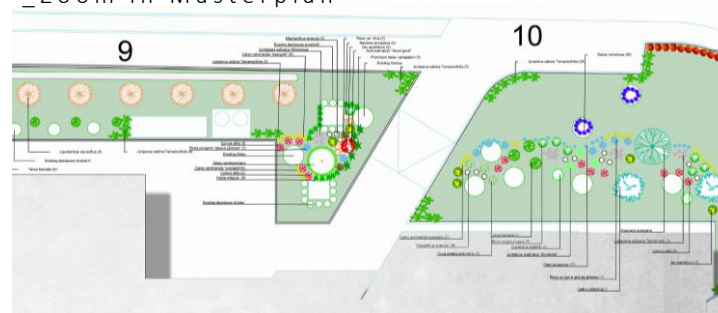
\_3d



\_Masterplan



\_Zoom in Masterplan



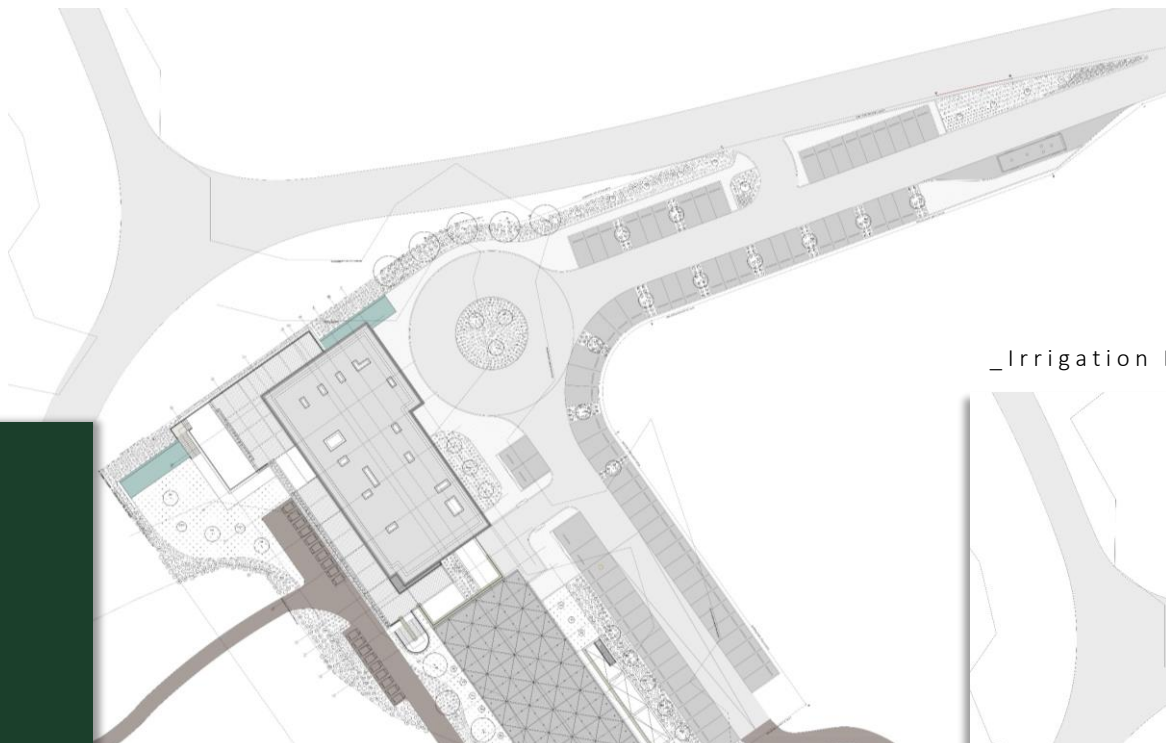
**Year**  
2018

**Project**  
Landscape Design

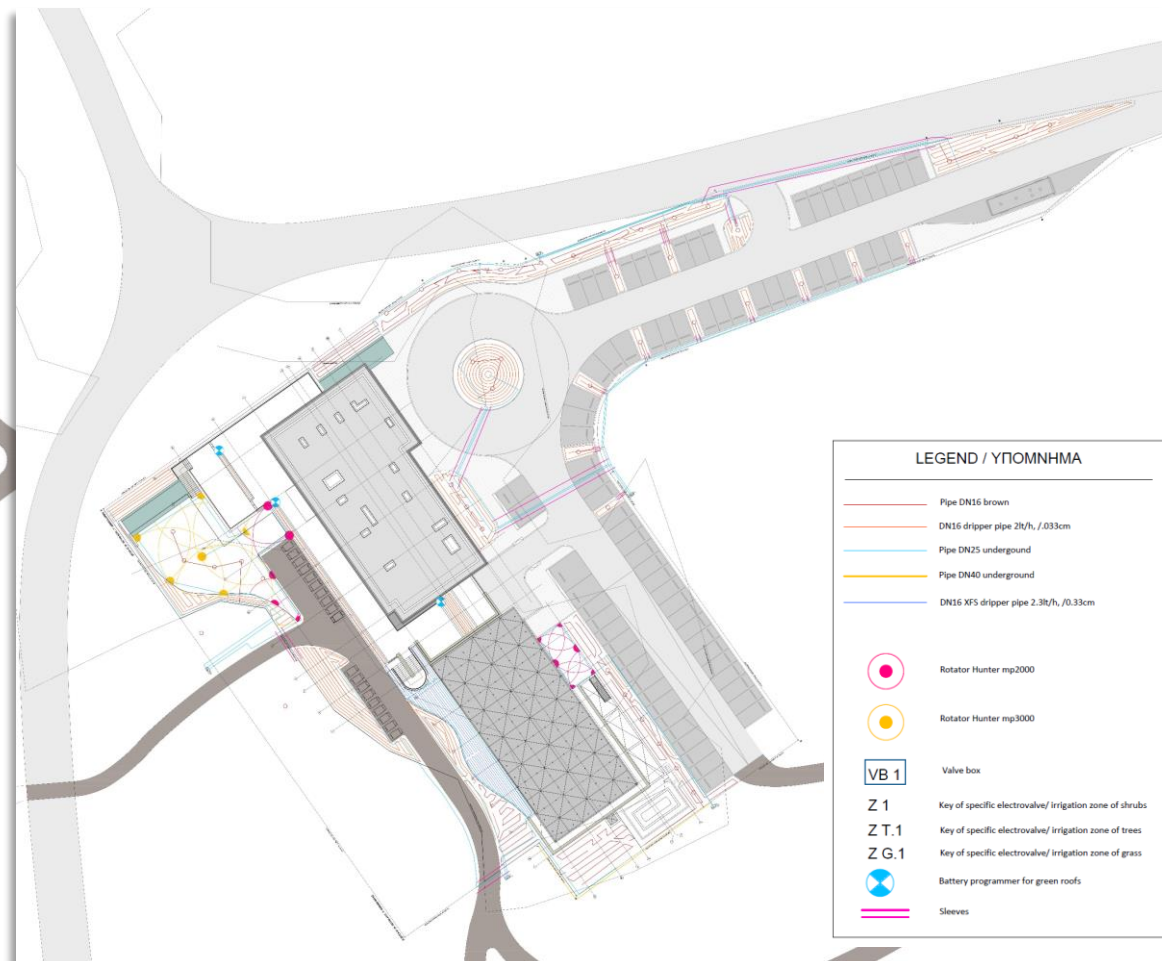
**Location**  
Globalworth Tower\_Romania



\_Master Plan



\_Irrigation Drawing



LEGEND / ΥΠΟΜΝΗΜΑ

TREES

Csm *Cercis siliquastrum multistem*, Κουτσουμά πολίσκλυνη  
Cs *Cupressus sempervirens*, Κυπαρίσσι αρθρόκλαδο  
Mp *Morus plataniolia fruitless*, Μουριά άκαρπη  
Pp *Pinus pinea*, Κουκουναριά  
Po *Platanus orientalis*, Πλάτανος  
Oe *Olea europea*, Ελιά

SHRUBS

Au *Arbutus unedo*, Κουμαριά  
Ee *Eleagnus ebbigiei*, Ελαιόγνος  
Mc *Myrtus communis*, Μυρτιά κοινή  
Pan *Phyllirea angustifolia*, Φιλλυρία  
Pl *Pistacia lentiscus*, Σχίνος  
Wf *Westringia fruticosa*, Βεστρίγγικα

Glw *Gaura lindheimeri white*, Γκάουρα  
Gl *Gaura lindheimeri pink*, Γκάουρα  
Ld *Levandula dentata*, Λαβάντα  
Pb *Perovskia blue spire*, Περόβσκια  
Rcb *Rosmarinus off. Corsican blue*, Δενδρολίβανο έρπον  
Sm *Salvia mystic spire*, Σάββια μπλε  
Sg *Salvia gregii*, Σάββια κόκκινη  
Gr *Gazzania rigens Sun gold*, Γκάζανια έρπουσα κίτρινη  
Hi *Helichrysum italicum*, Ελκχρυσό  
Tv *Tulbaghia violacea*, Τουλμπάγια  
St *Stipa tenuissima*, Στίπα  
Ps *Penisetum setaceum*, Πενίσέτουμ  
Pur *Penisetum setaceum rubra*, Πενίσέτουμ  
Pa *Pennisetum alopecuroides*, Πενίσέτουμ

LAWN

Year  
2020-2021

Project  
Landscape Design & Construction

Location  
Costa Navarino Golf Building\_Pylos Greece

LEGEND / ΥΠΟΜΝΗΜΑ

Pipe DN16 brown  
DN16 dripper pipe 2lt/h, /0.03cm  
Pipe DN25 underground  
Pipe DN40 underground  
DN16 XFS dripper pipe 2.3lt/h, /0.33cm

Rotator Hunter mp2000

Rotator Hunter mp3000

VB 1 Valve box

Z 1 Key of specific electrovalve/ Irrigation zone of shrubs

Z T.1 Key of specific electrovalve/ Irrigation zone of trees

Z G.1 Key of specific electrovalve/ Irrigation zone of grass

Battery programmer for green roofs

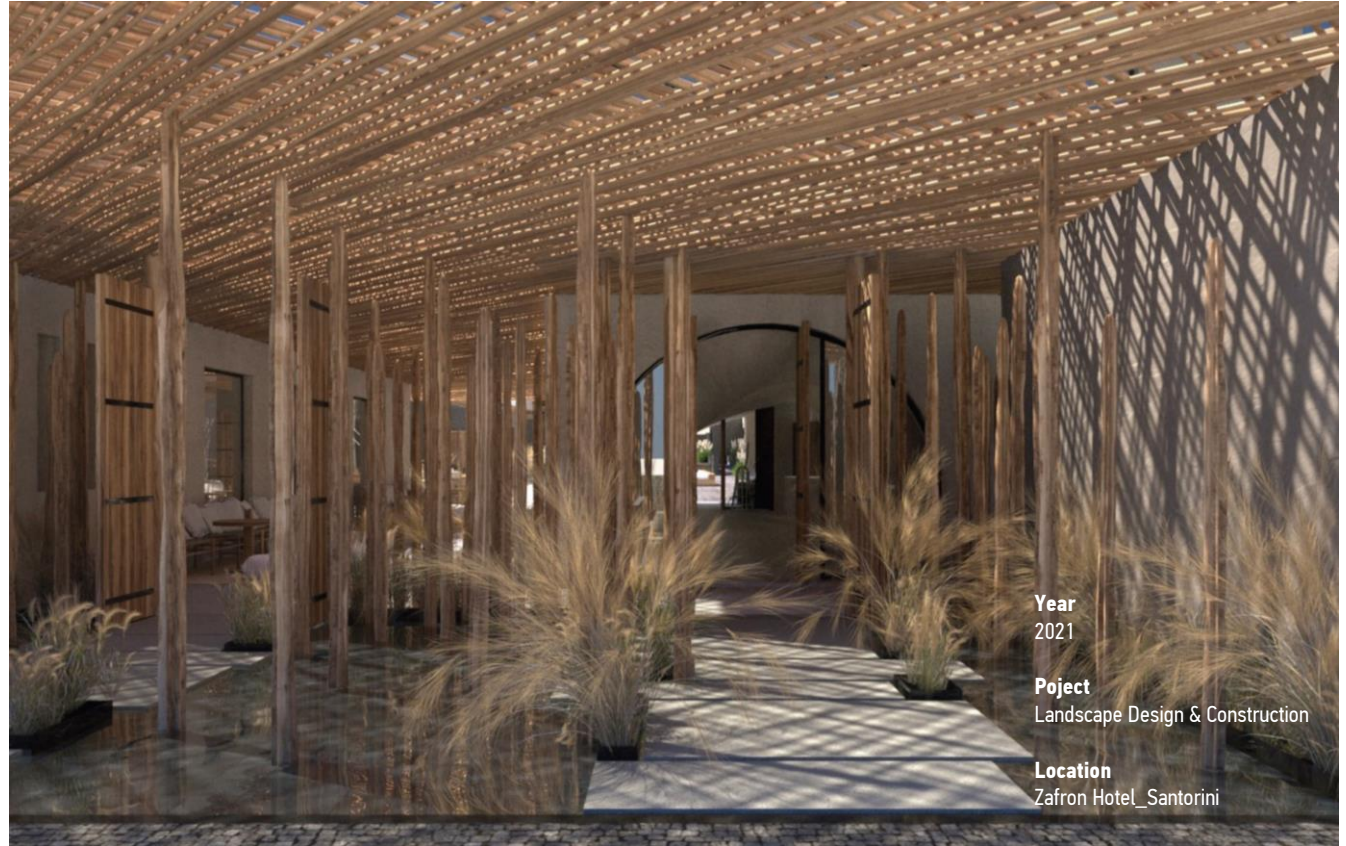
Sleeves



\_Master Plan



\_3d

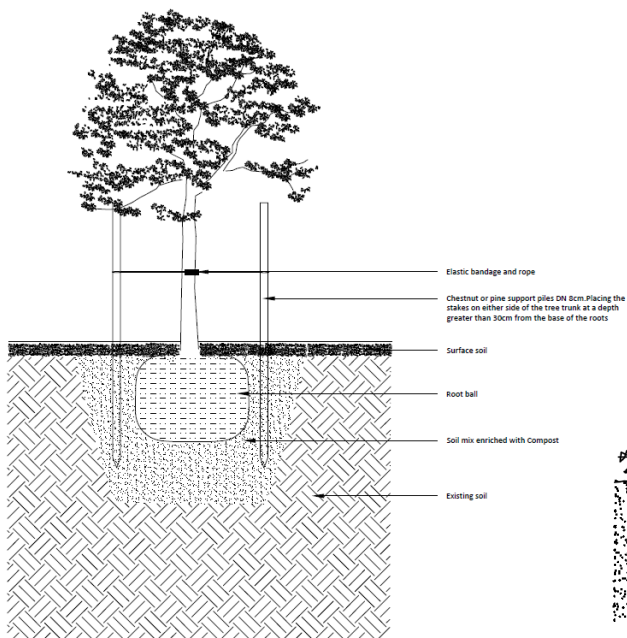


Year  
2021

Project  
Landscape Design & Construction

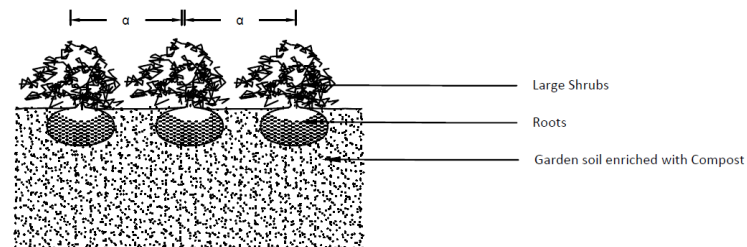
Location  
Zafron Hotel\_Santorini

\_Planting Details



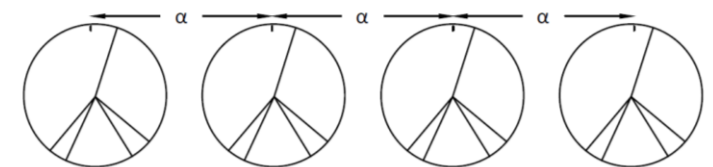
Tree Staking Detail\_Morus

1. Planting trees 5 cm above the final level as a provision for soil compaction.
2. Ensure adequate drainage of the planting hole before planting.



Detail of Planting shrubs and herbs and grasses

Shrubs will be placed 5 cm above the final level as a provision for soil compaction



Detail of Planting Shrubs 0,5\_1,00

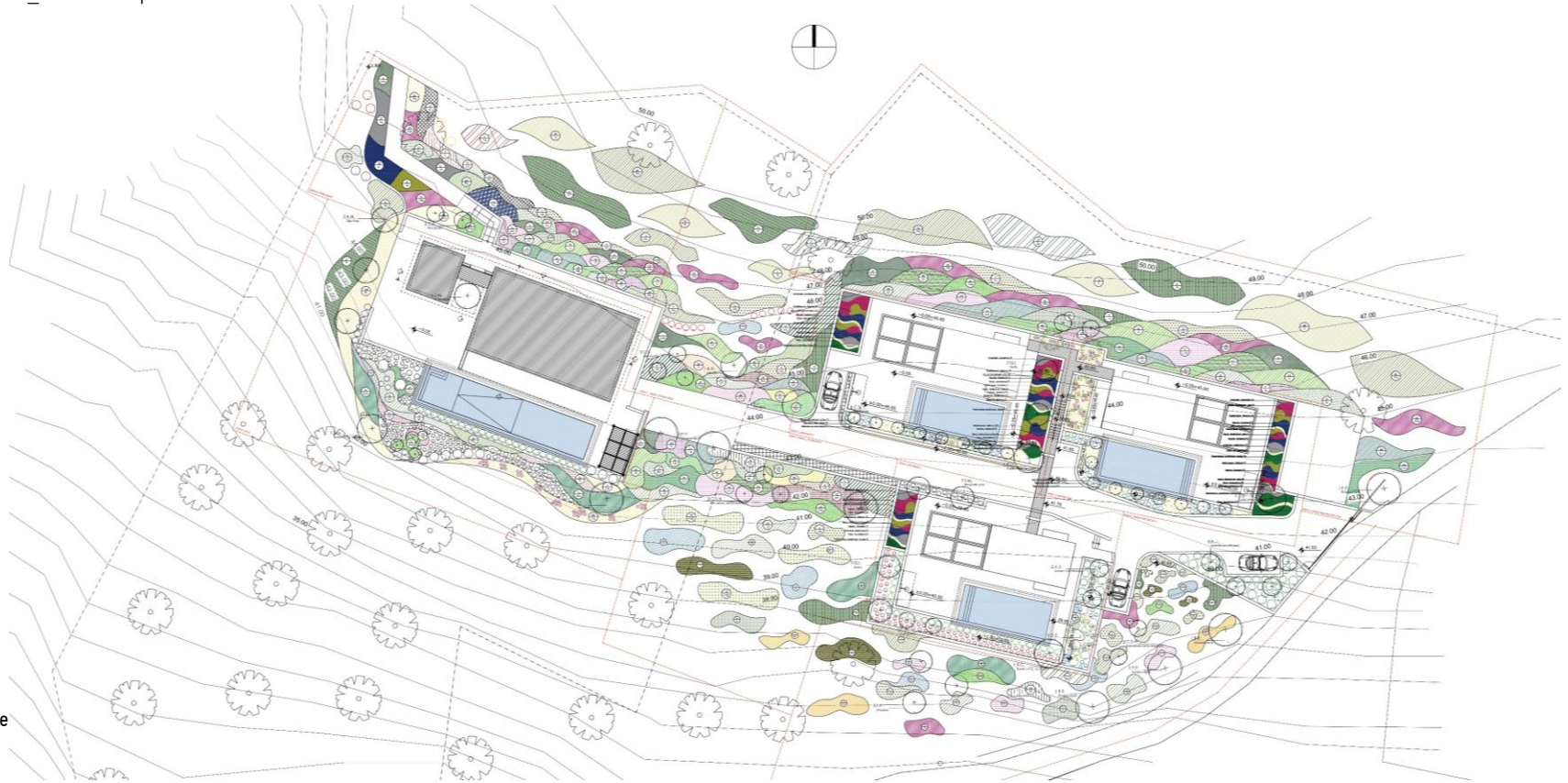
The distance  $\alpha$  is constant.

For the shrubs *Arbutus unedo*, *Elaeagnus ebbingei*, *Phillyrea angustifolia*:  $\alpha=0,90\text{cm}$

For the shrubs *Westringia fruticosa*, *Myrtus communis*:  $\alpha=0,70\text{cm}$



\_Masterplan

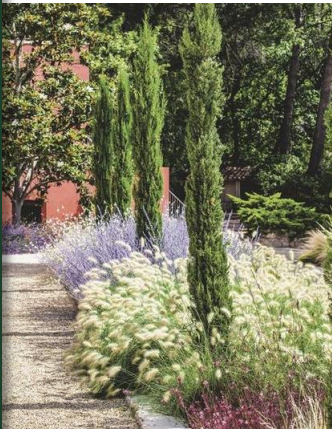


**Year**  
2020

**Project**  
Landscape Design

**Location**  
Private Residences\_Chalkidiki Greece

\_Case studies





# PUBLIC PARK\_MARATHON

**Year**  
2019

**Project**  
Landscape Design

**Location**  
Public Park\_Marathon Athens

\_Following the pictures of the existing burnt park



## \_Masterplan

- Trees
- Trees with yellow blooming
- Trees with red leaves
- Trees with pink blooming
- Climbing Plants
- Small shrubs
- Medium Shrubs
- Grasses
- Ground cover Plants
- Lawn
- Paths
- Surrounding Area

## Large scale projects



\_Case studies with Suggested plants





PRIVATE RESIDENCE, PAROS ISLAND

**Medium scale project**



Landscape design





Masterplan



LEGEND

- XX Trees
- Xx Shrubs
- Residence
- Swimming Pool

**Year**  
2022

**Project**  
Landscape Design

**Location**  
Private residence, Paros island



## PRIVATE RESIDENCES, ATHENS

## Small scale projects

**Year**  
2022

**Project**  
Landscape Design & Construction

**Location**  
Private residence, Ntrafi\_Athens



## Landscape design

**Year**  
2022

**Project**  
Landscape Design

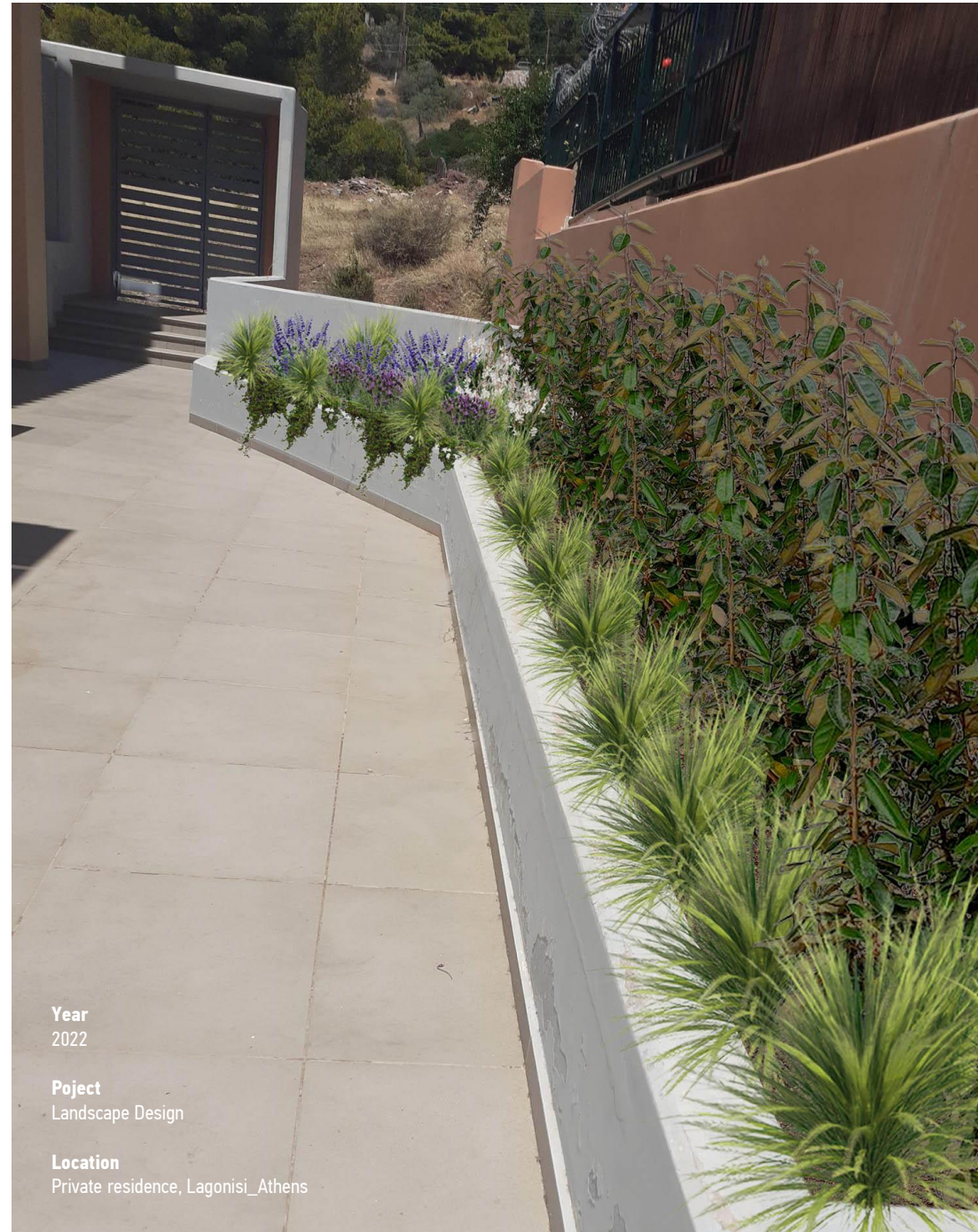
**Location**  
Private residences, Lagonisi\_Athens



**Year**  
2022

**Project**  
Landscape Design

**Location**  
Private residence, Lagonisi\_Athens





## PRIVATE RESIDENCE, ATHENS

# Small scale projects

**Year**  
2021

**Project**  
Landscape Design & Construction

**Location**  
Private residence, Alimos, Athens

**Year**  
2019

**Project**  
Environmental Landscape Design

**Location**  
Public park, Schistos





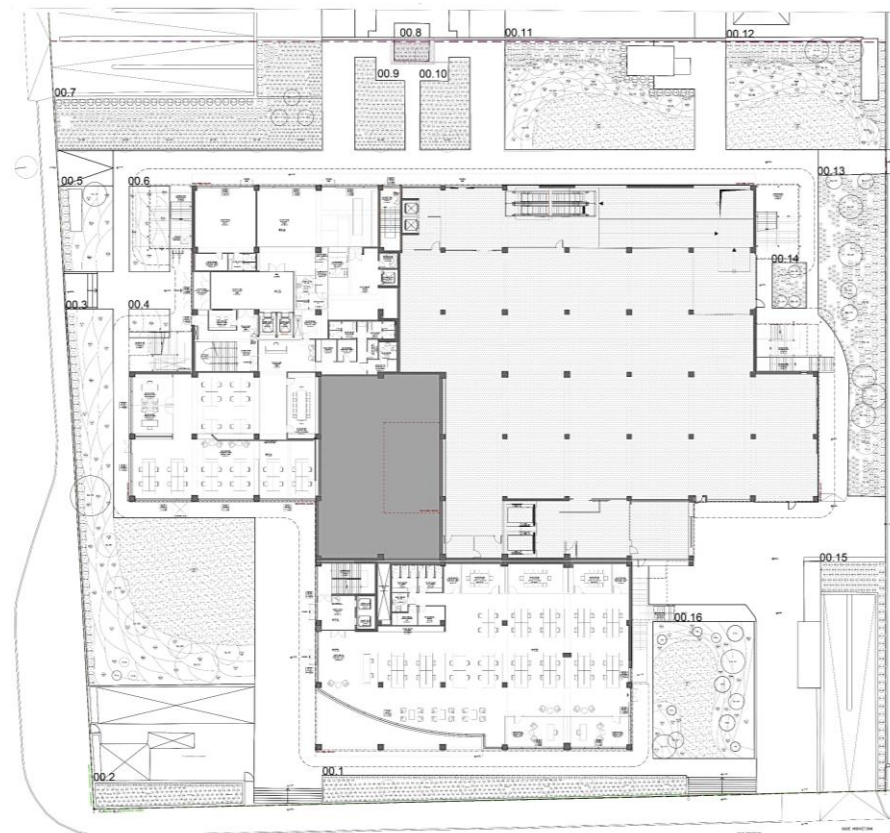
# SKYWALKER\_OFFICE BUILDING, ATHENS

## Ongoing projects

\_Architectural 3D



\_Masterplan



Landscape design



**Year**  
2022

**Project**  
Landscape Design

**Location**  
Office Building, Palaio Faliro, Athens

**Client**  
Brook Lane Capital



# PRIVATE RESIDENCES, ATHENS

## Ongoing projects

\_Masterplan



\_Architectural 3D\_Project 2



\_Architectural 3D\_Project 2



**Year**  
2022

**Project**  
Landscape Design & Construction

**Location**  
Both Residences, Glyfada\_Athens

**Client**  
Sunnyland



# Portfolio

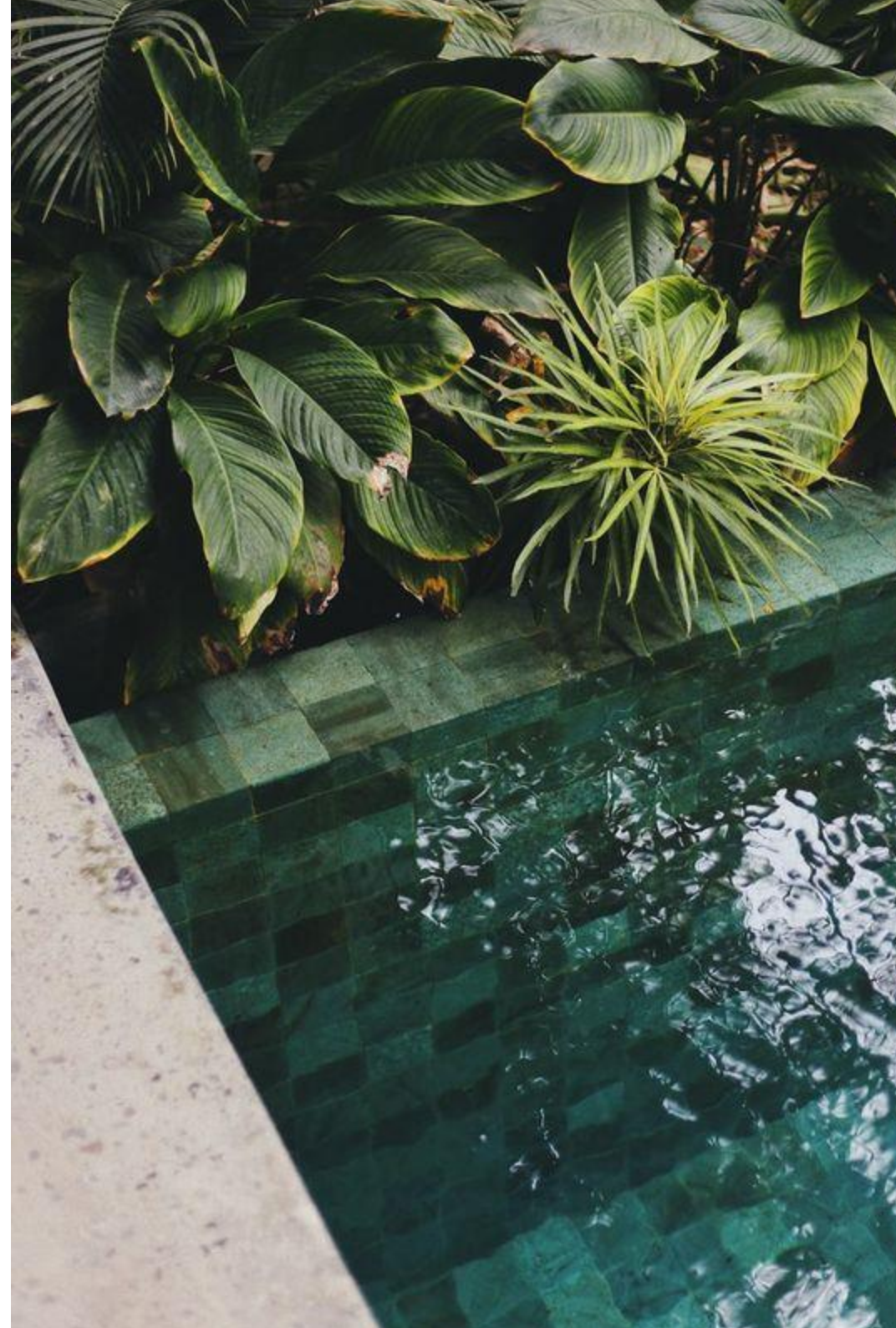
Landscape design

Construction

Maintenance

Technical consulting

# PROJECTS

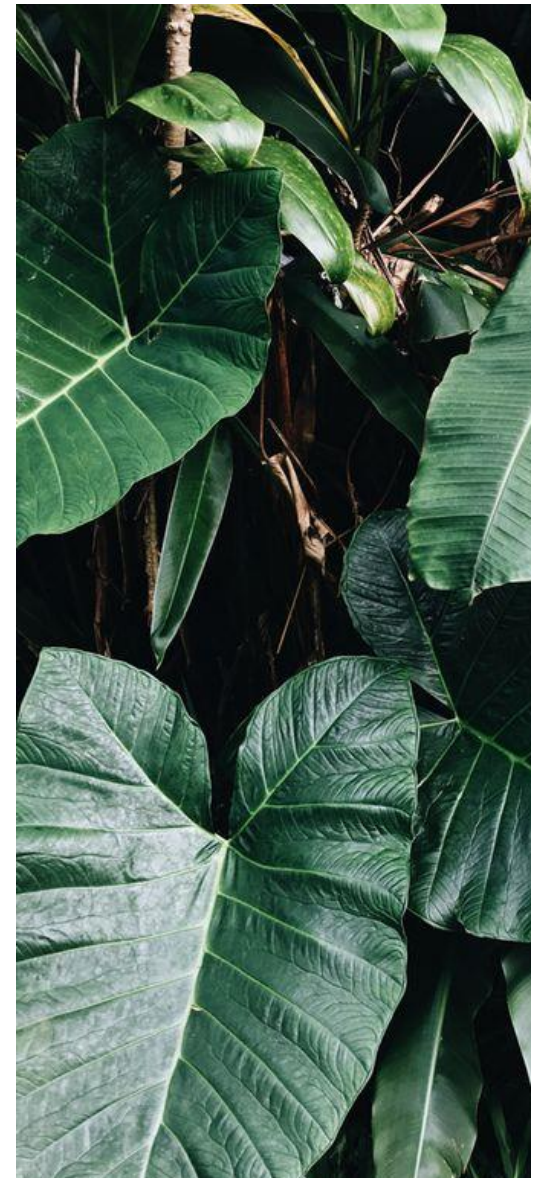






## Photobook

Landmacon's many years of experience in the field of exterior design makes it one of the most dynamic companies in this field, with a multitude of projects throughout Greece.





Ionia odos\_Motorway



Northern roadway interchange, Katerini, Korinos, Makrigialos



North & South Tunnel, Tempi



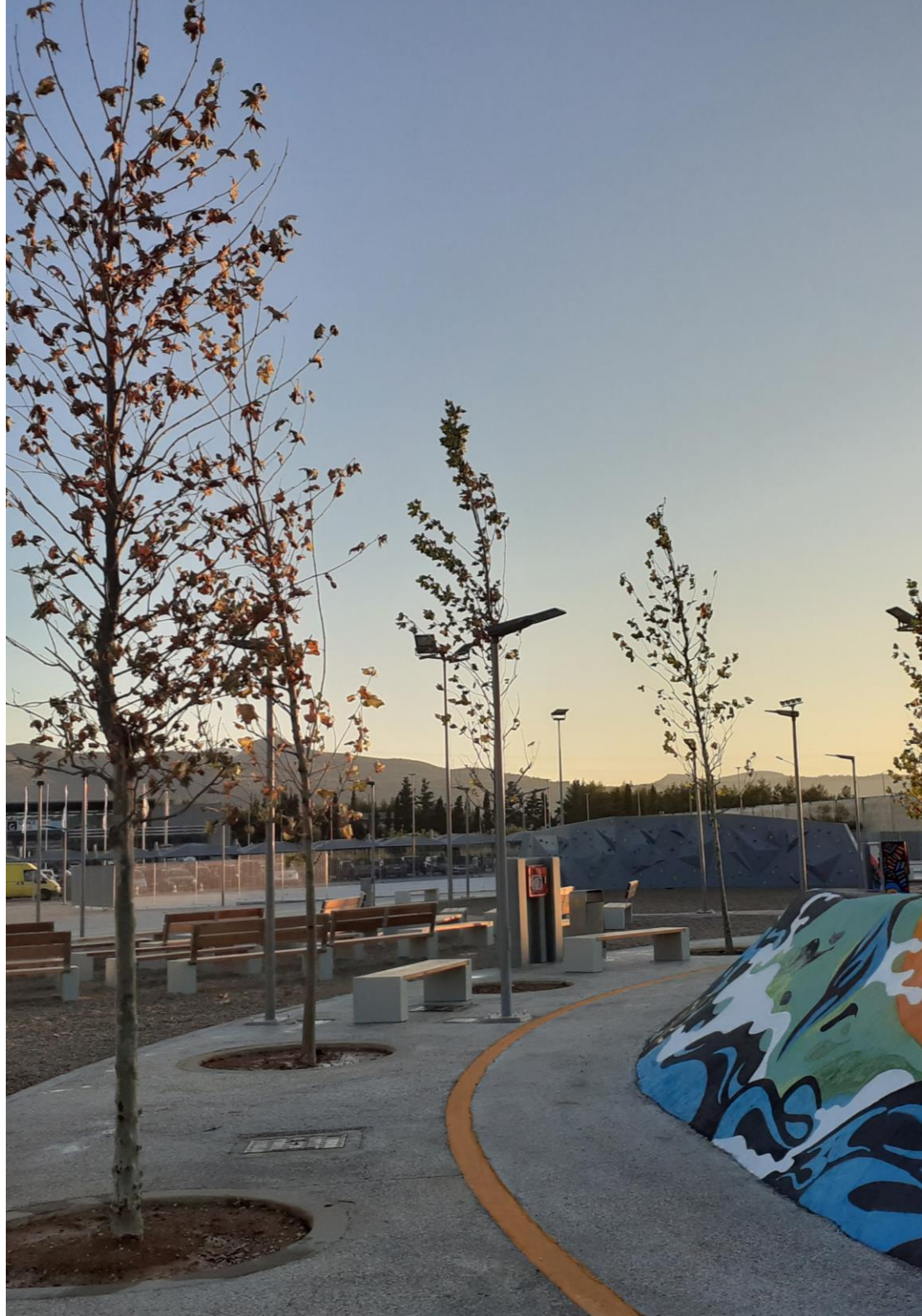
Ionia odos\_Motorway



Construction



Mare West Park, Corinth





Costa Navarino, The Hills Course, Pylos

Construction





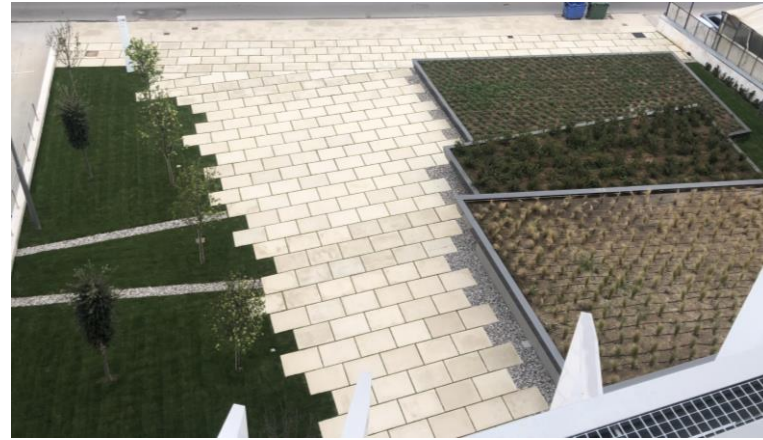
## The National Gallery-Alexandros Soutzos Museum, Athens





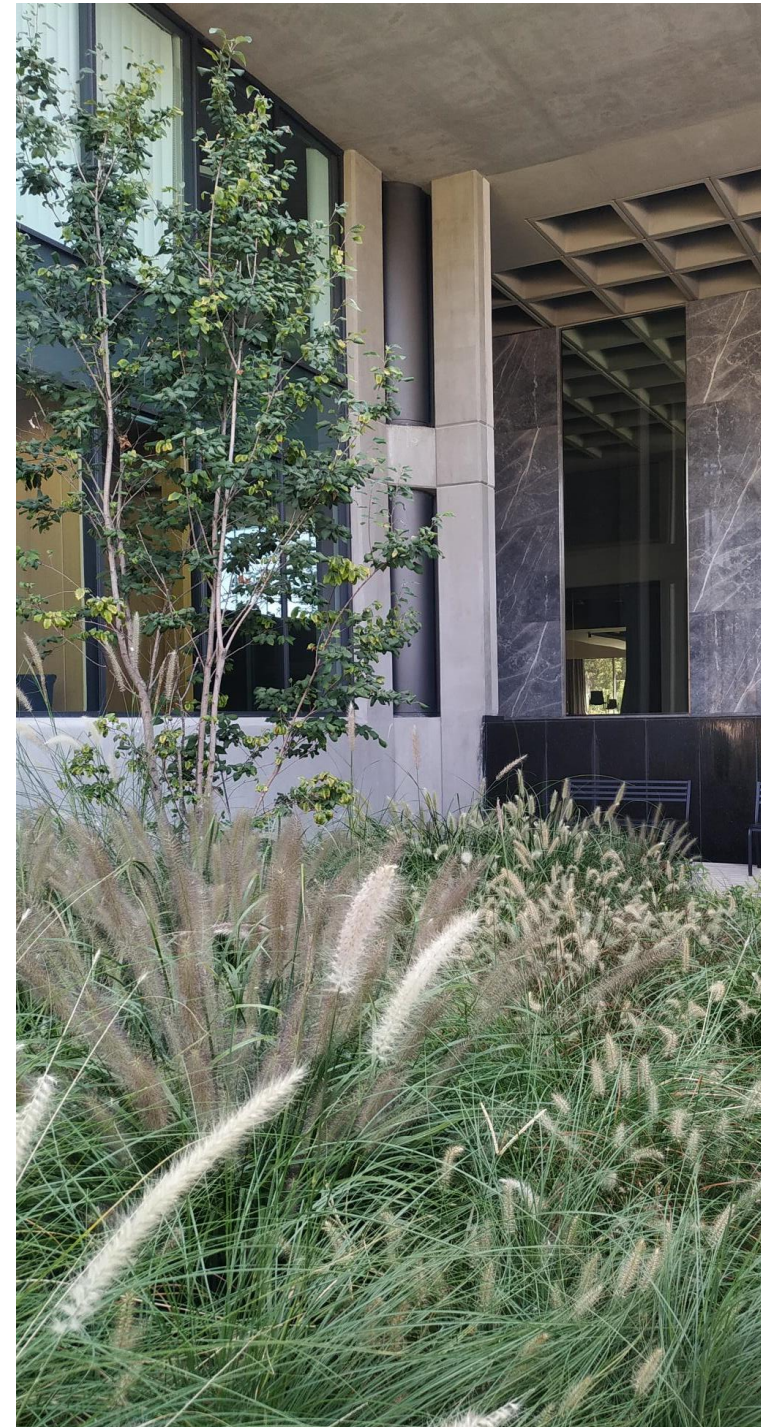
## Butterfly Building, Chalandri

Construction



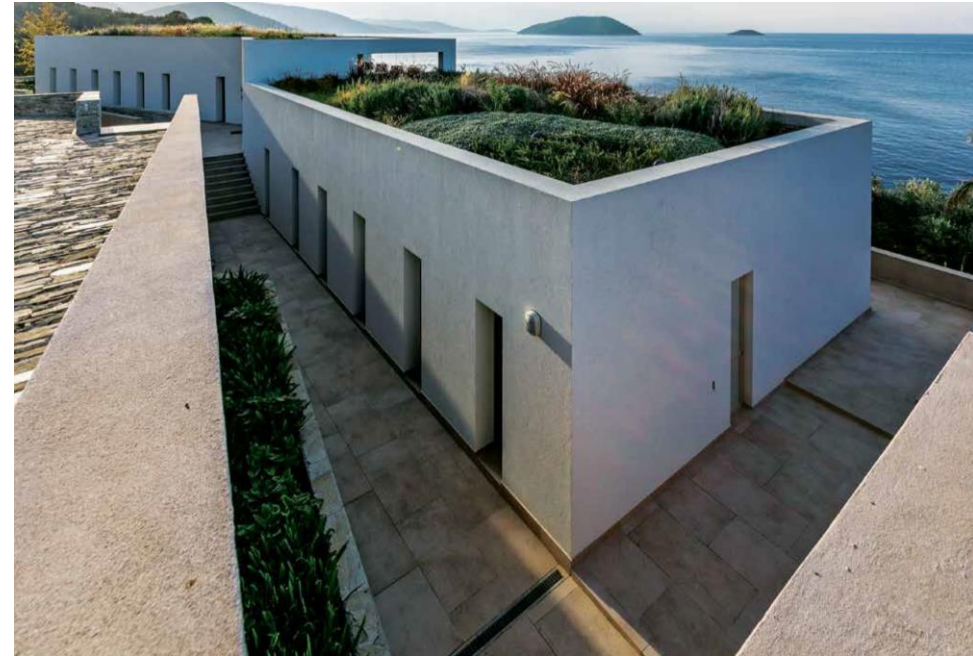


## Golden Union Building, Lykovrisi





## Private residence, Skopelos island





## South 42 apartments, Glyfada

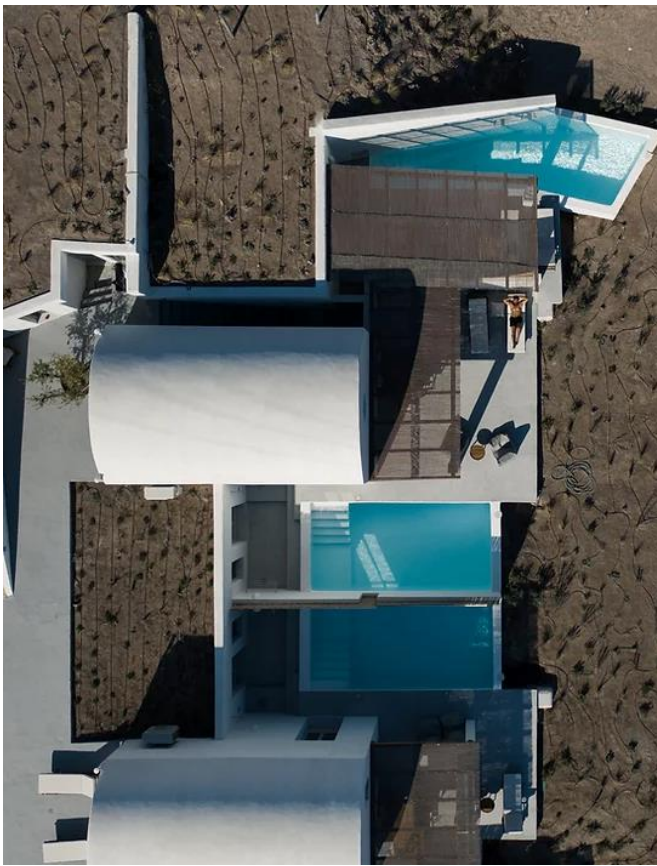




Thymari Lodge apartments, Santorini island



Construction





## Radisson Blu-Hotel Zaffron, Santorini island





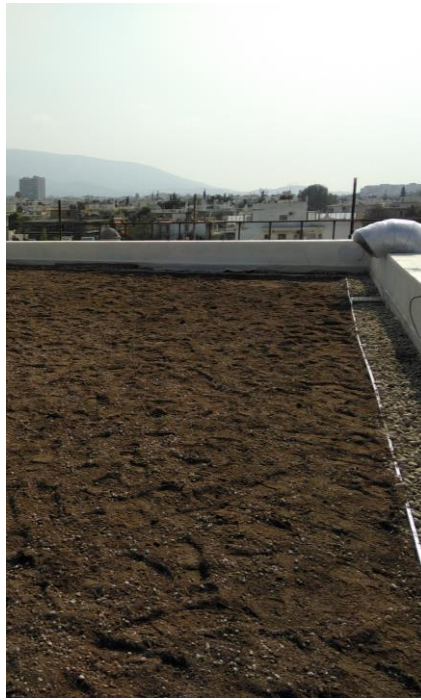
One and Only Hotel, Kea island (under construction)

Construction





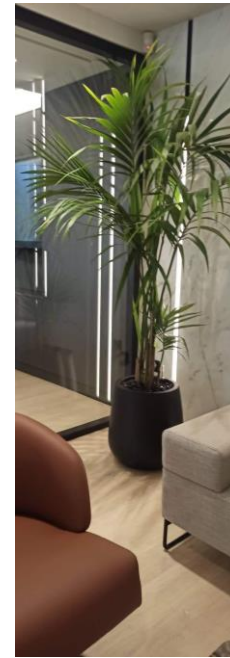
## Landscape Design & Construction of Green Roofs





## Moss wall, Green wall, Zen garden and Indoor planting in Office Buildings

Construction





Private residence, Marousi\_Athens





# Portfolio

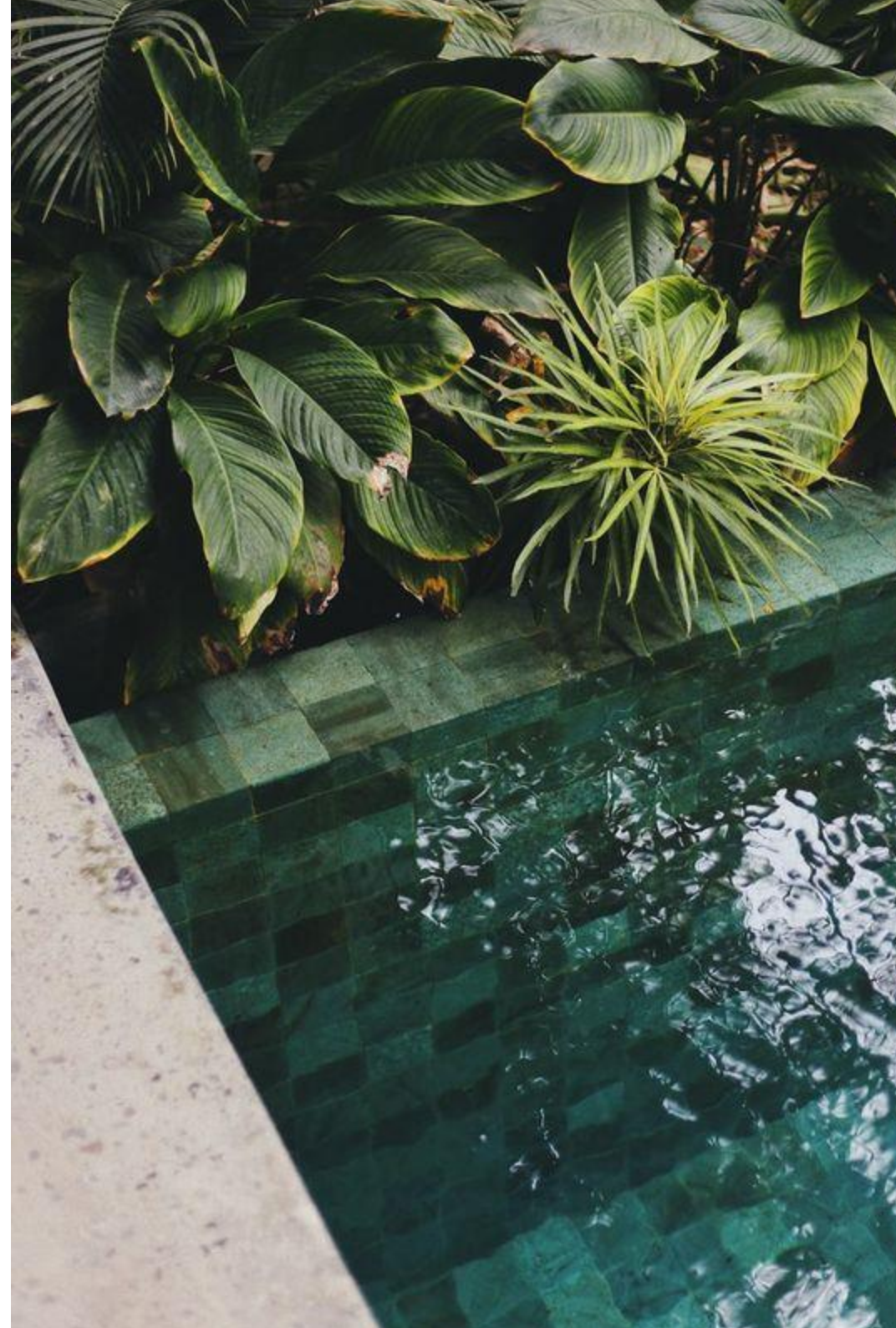
Landscape design

Construction

— Maintenance

Technical consulting

# PROJECTS

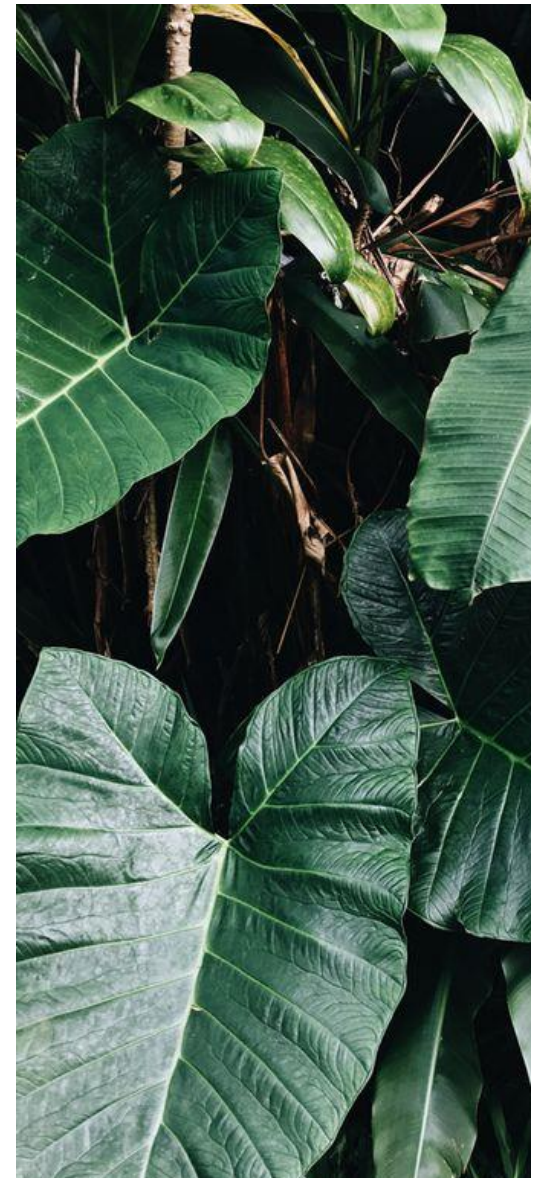






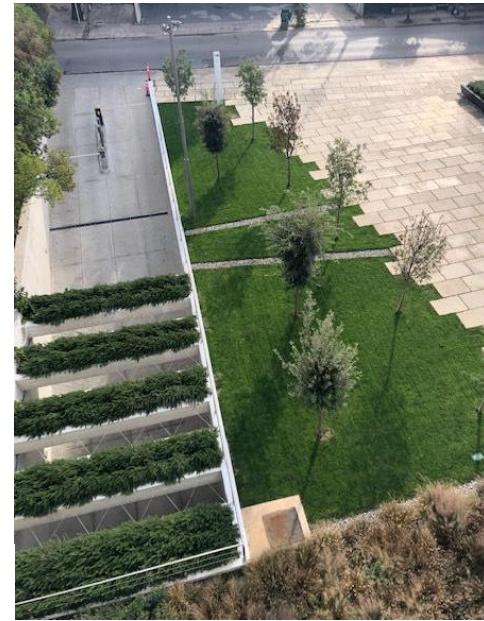
## Photobook

Landmacon's provides integrated professional management of landscape areas.





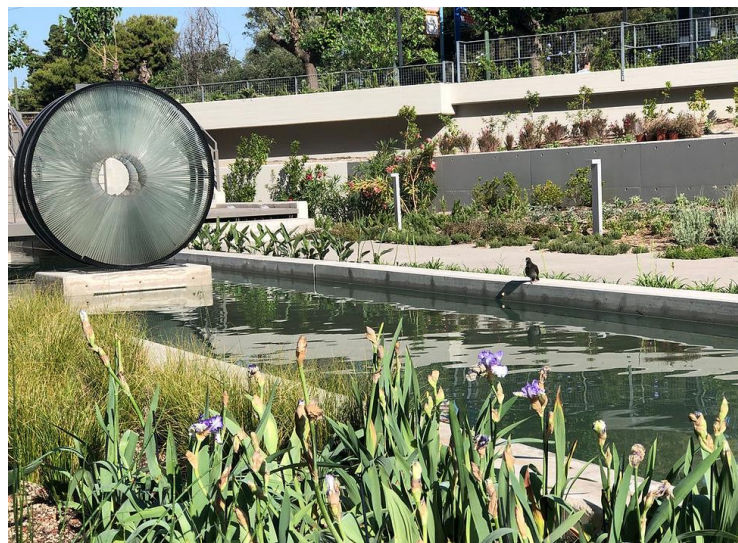
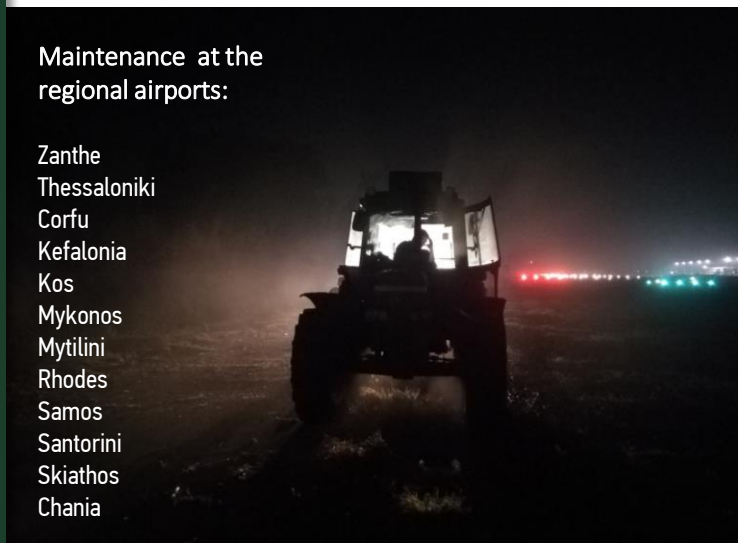
## Regional Airports & Exterior Spaces of Office Buildings



## Maintenance

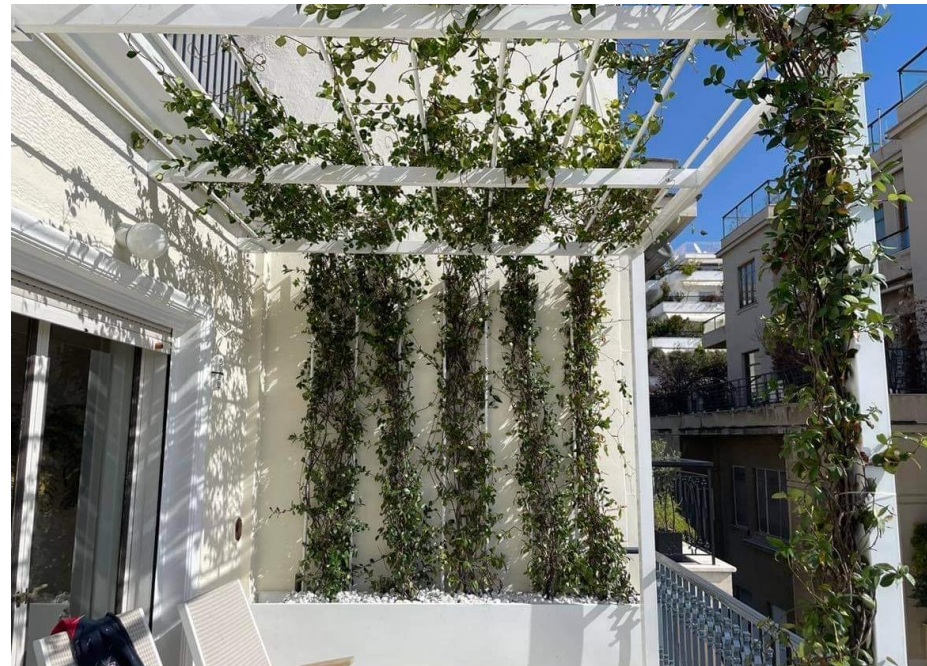
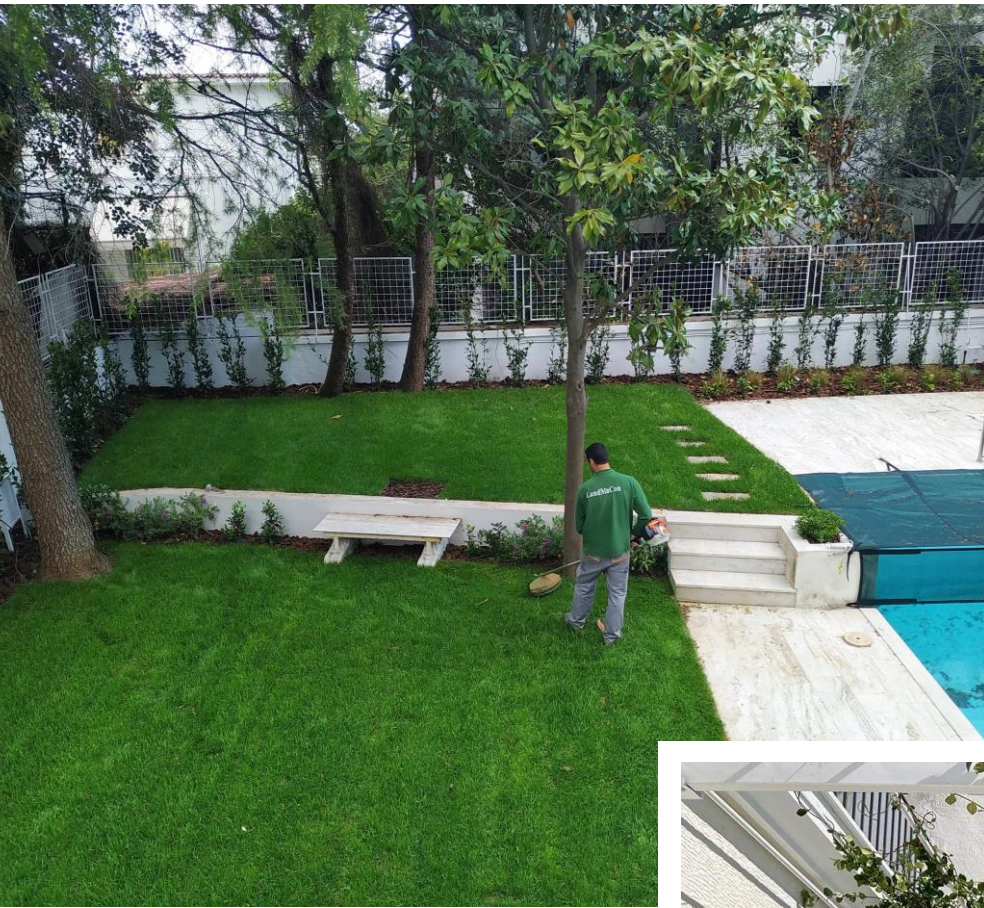
Maintenance at the regional airports:

Zanthe  
Thessaloniki  
Corfu  
Kefalonia  
Kos  
Mykonos  
Mytilini  
Rhodes  
Samos  
Santorini  
Skiathos  
Chania





## Private residences, Verandas and Roof Gardens





# Portfolio

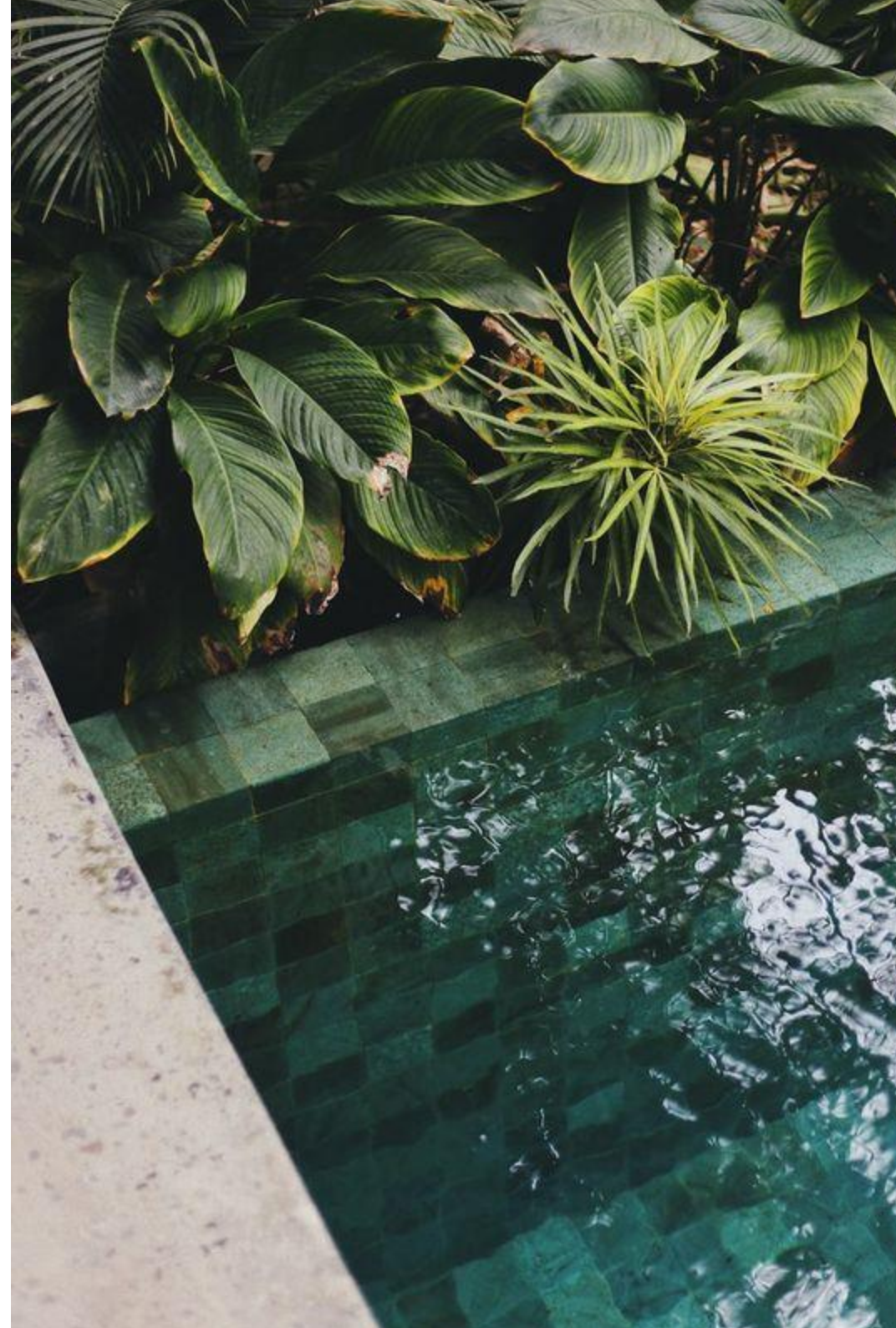
Landscape design

Construction

Maintenance

—— Technical consulting

# PROJECTS

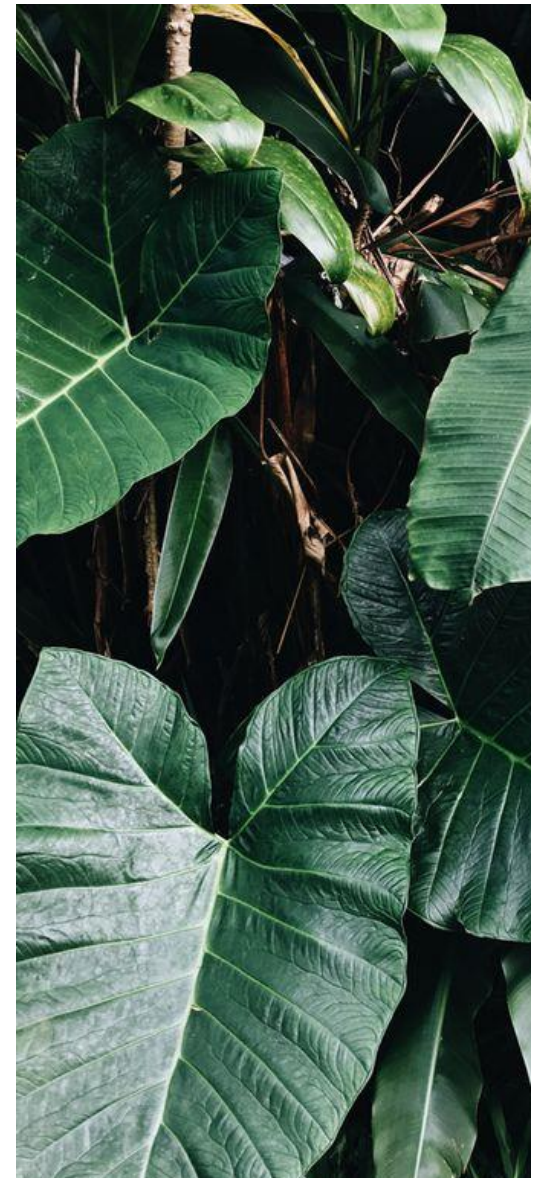






## Photobook

Landmacon's many years of experience in the field of exterior design makes it one of the most dynamic companies in this field, with a multitude of projects throughout Greece.

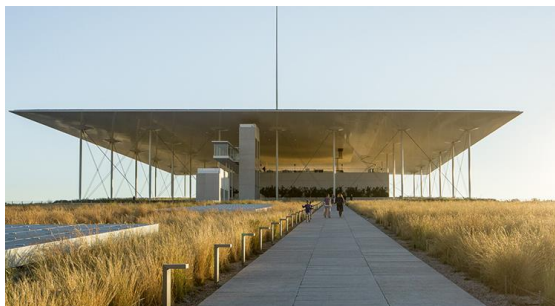








Technical consulting / Management / Construction supervision



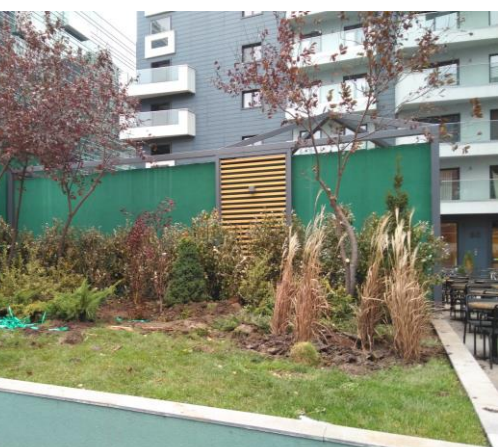


## Olympic projects: Baseball Stadium, Complex of Olympic Village





## "Upground" Compound in Bucharest, Romania





# They trust us

**MAKRIDIS**  
ASSOCIATES ■

**gb<sup>a</sup>**  
ENGINEERING ARCHITECTURE

**K  
N  
Group**

**BLUE**  
development  
construction

**SUNNYLAND S.A.**  
Integrated Real Estate Development

**GEK TERNA**  
GROUP OF COMPANIES

**Redex**  
Redefining Building Excellence

**J&P**  
**αβαξ**

**ORION**

**TELCO SERV**  
CONNECTING INTELLIGENCE

**Νέα Οδός**  
**Κεντρική Οδός**

**IK** **κομβός εβρε**  
INDUSTRIAL DEVELOPMENT GROUP & DESIGN STUDIO

**ΕΛΚΥΣΤΗΣ ΑΤΕ**

**ΧΑΛΥΒΟΥΡΓΙΑ**  
ΕΛΛΑΔΟΣ

**Fraport**  
Greece

**globalworth™**  
φφφ

**ΔΗ.Κ.Ε.Φ.Ψ.**  
Δημοτική Κοινωνική Επιχείρηση Φιλοθέης - Ψαλκοῦ

**VINCI**  
CONSTRUCTION | GRANDS PROJETS

**GEP**

**ΕΟΝΙΚΗ**  
Η ΠΡΩΤΗ ΑΣΦΑΛΙΣΤΙΚΗ





ΕΘΝΙΚΗ ΤΡΑΠΕΖΑ  
ΤΗΣ ΕΛΛΑΔΟΣ



SOUTH







Costa Navarino Golf Club\_The Hills Course

# PROFILE

48 Plapouta Avenue, Irakleion  
 Athens, Greece pc. 14122  
 Tel : 2107474076  
 E-mail: [info@landmacon.gr](mailto:info@landmacon.gr)  
[www.landmacon.gr](http://www.landmacon.gr)